

PRODUCT INFORMATION PACKET

Model No: 444TSTFC16002

Catalog No: GT1148

125 HP General Purpose Motor, 3 phase, 3600 RPM, 575 V, 444TS Frame, TEFC
Three Phase TEFC Motors



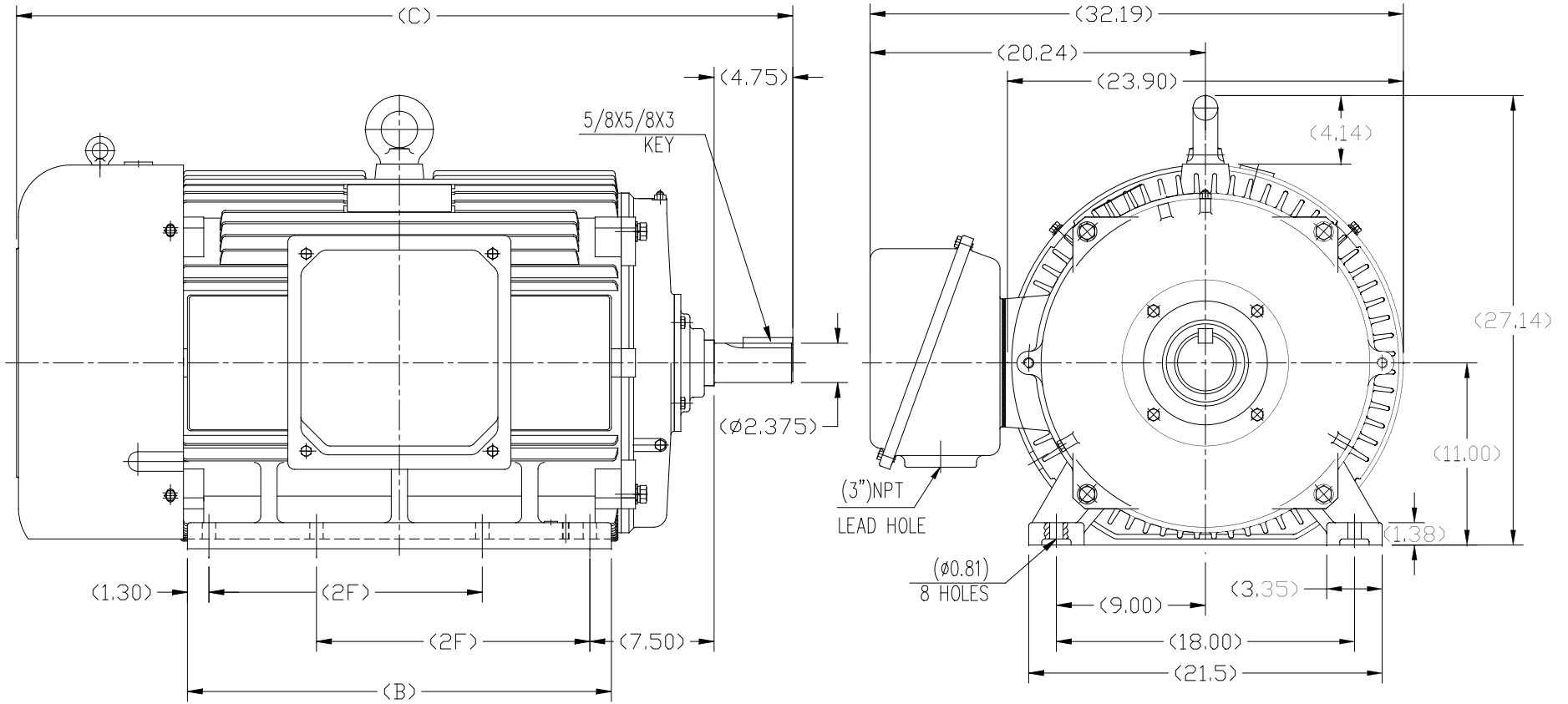
Nameplate Specifications

| | | | |
|------------------------|------------|----------------------------|-----------------------------|
| Output HP | 125 Hp | Output KW | 93.0 kW |
| Frequency | 60 Hz | Voltage | 575 V |
| Current | 109.0 A | Speed | 3582 rpm |
| Service Factor | 1.15 | Phase | 3 |
| Efficiency | 95 % | Power Factor | 90 |
| Duty | Continuous | Insulation Class | F |
| Design Code | B | KVA Code | G |
| Frame | 444TS | Enclosure | Totally Enclosed Fan Cooled |
| Thermal Protection | No | Ambient Temperature | 40 °C |
| Drive End Bearing Size | 6314 | Opp Drive End Bearing Size | 6314 |
| UL | Recognized | CSA | Y |
| CE | Y | IP Code | 43 |

Technical Specifications

| | | | |
|-----------------------|------------------------------|--------------------|------------------|
| Electrical Type | Squirrel Cage Inverter Rated | Starting Method | Line Or Inverter |
| Poles | 2 | Rotation | Reversible |
| Resistance Main | .03 Ohms | Mounting | Rigid Base |
| Motor Orientation | Horizontal | Drive End Bearing | Ball |
| Opp Drive End Bearing | Ball | Frame Material | Cast Iron |
| Shaft Type | TS | Overall Length | 47.05 in |
| Shaft Diameter | 2.375 in | Shaft Extension | 4.75 in |
| Assembly/Box Mounting | F1/F2 CAPABLE | | |
| Outline Drawing | SS620281-444TS | Connection Drawing | EE7300 |

This is an uncontrolled document once printed or downloaded and is subject to change without notice. Date Created:20/08/2020



1. THIS MOTOR IS NOT DUAL DRILLED FOR 444T/445T OR 447T/449T
2. THIS MOTOR IS DRILLED FOR F1/F2 CAPABILITY

| | | | |
|-------|-------|-------|-------|
| 444TS | 47.05 | 25.60 | 14.50 |
| 445TS | 47.05 | 25.60 | 16.50 |
| 447TS | 52.17 | 30.70 | 20.00 |
| 449TS | 52.17 | 30.70 | 25.00 |
| Frame | C | BB | 2F |

| | | TOLERANCES UNLESS SPECIFIED | | | DRAWN | |
|--|---|-----------------------------|----------|-------|-------------|----------------|
| | | DEC. | INCHES | | CHK | HZJ 02-21-2010 |
| | | .X | ±.1 | | APPD | CL 02-21-2010 |
| | | .XX | ±.03 | TITLE | SCALE | 1=6 |
| C | UPDATED DRAWING PER MARK-UP ECD-0108274 | W/GJ | 10-7-16 | EMH | XXXX | ±.0005 |
| A | 2 leads hole change to 1 | CL | 2010-9-8 | XXXX | MAT'L. | |
| NO. | REVISION | BY & DATE | | CHK | ANG | ±1/2 |
| THIS DRAWING IN DESIGN AND DETAIL IS OUR PROPERTY AND MUST NOT BE USED EXCEPT IN CONNECTION WITH OUR WORK ALL RIGHTS OF DESIGN AND INVENTION ARE RESERVED THIS IS AN ELECTRONICALLY GENERATED DOCUMENT - DO NOT SCALE THIS PRINT | | | | RFP | CAD FILE | SS620281 |
| | | | | SIZE | DRAWING NO. | REV. |
| | | | | B | SS620281 | C |

**THREE PHASE - SINGLE VOLTAGE
MOTOR - CONDUIT BOX @ 'A'**

**TO REVERSE ROTATION:
INTERCHANGE ANY TWO
LINE LEAD CONNECTIONS.**

TERMINAL BLOCK WHEN SPECIFIED



VIEW OF TERMINAL END

**IF MOTOR HAS
6 LEADS**



A-9806 DECAL

**OPTIONAL CORD
CONNECTION**



| | | |
|---|---------------------------|---------------------------|
| DRAWING REVISION AB | REVISION BY JJB | DATE 06-27-2017 |
| ECO ECO-0125361 | APPROVED BY TB | DATE 06-27-2017 |
| ECO DESCRIPTION UPDATED TO CURRENT STANDARDS | | |
| <small>COPYRIGHT REGAL BELOIT AMERICA, INC. ALL RIGHTS RESERVED. PROPRIETARY AND CONFIDENTIAL INFORMATION - THIS DOCUMENT IS THE PROPERTY OF REGAL BELOIT AMERICA, INC. ("OWNER") AND CONTAINS OWNER'S PROPRIETARY INFORMATION. ANY PERSON, CORPORATION OR OTHER FIRM RECEIVING IT IS DEEMED, BY RECEIVING IT, TO AGREE THAT IT, AND/OR ANY PART OF IT, SHALL NOT BE DISCLOSED TO ANY PERSON, CORPORATION OR OTHER ENTITY, DUPLICATED, AND/OR USED, EXCEPT AS EXPRESSLY APPROVED IN WRITING IN ADVANCE BY OWNER. THIS DOCUMENT SHALL BE RETURNED TO OWNER UPON REQUEST. IT MAY BE SUBJECT TO CERTAIN RESTRICTIONS UNDER APPLICABLE EXPORT CONTROL LAWS AND REGULATIONS.</small> | | |



| |
|---------------------------|
| DRAWN BY DA |
| DATE 03-26-1993 |
| APPROVED BY TB |
| DATE 03-26-1993 |
| REFERENCE |
| THIRD ANGLE PROJECTION |

| | | |
|-----------------------------------|---------------------------------|--|
| Regal Beloit America, Inc. | | |
| | | DESCRIPTION CONNECTION DIAGRAM EXTERNAL - SINGLE VOLTAGE - 3Ø MOTOR |
| MATERIAL | PROCESS/FINISH | |
| SIZE A | DRAWING NUMBER EE7300 | SHEET 1 OF 1 |

Data Sheet

Date: 1/28/2019

4441STFC16002

Customer: _____
 Attention: _____



Submital

Submitted by: FAREEDA DUDEKULA

Data @ 575 V

Motor Load Data

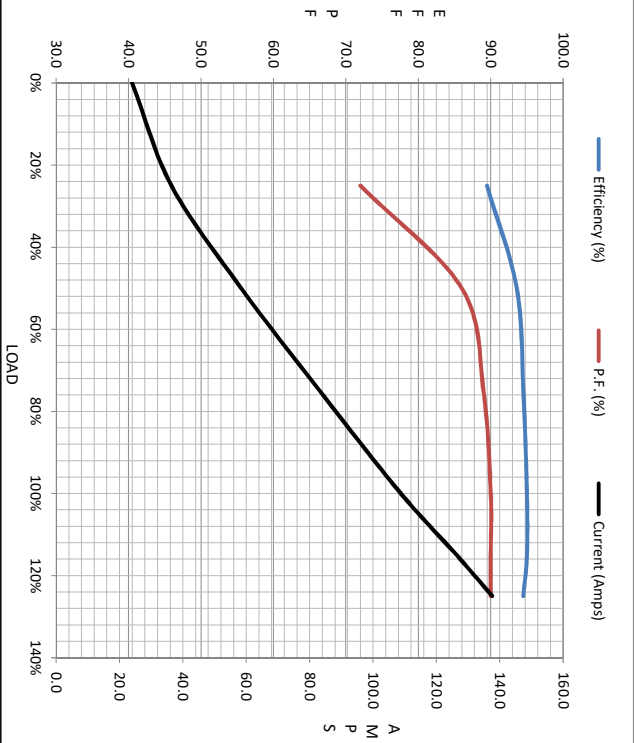
| Load | 0% | 25% | 50% | 75% | 100% | 115% | 125% | LR |
|----------------|------|------|------|------|------|------|------|------|
| Current (Amps) | 24.0 | 36.4 | 58.4 | 83.2 | 109 | 126 | 138 | 726 |
| Torque (ft-lb) | 0.00 | 45.5 | 91.5 | 138 | 183 | 211 | 230 | 320 |
| RPM | 3600 | 3595 | 3590 | 3588 | 3582 | 3578 | 3575 | 0 |
| Efficiency (%) | | 89.5 | 93.6 | 94.5 | 95.0 | 95.0 | 94.5 | |
| P.F. (%) | 10.0 | 72.0 | 86.0 | 89.0 | 90.0 | 90.0 | 90.0 | 33.0 |

Motor Speed Data

| | LR | Pull-Up | BD | Rated | Idle |
|----------------|-----|---------|------|-------|------|
| Speed (RPM) | 0 | 1800 | 3475 | 3582 | 3600 |
| Current (Amps) | 726 | 660 | 460 | 109 | 24.0 |
| Torque (ft-lb) | 320 | 250 | 475 | 183 | 0.00 |

Information Block

| | | | | | |
|----------------------------|--------------------------|--------|--------|--------|---------|
| HP | 125.0 | | | | |
| Sync. RPM | 3600 | | | | |
| Frame | 444 | | | | |
| Enclosure | TEFC | | | | |
| Construction | TFC | | | | |
| Voltage | 575 V | | | | |
| Frequency | 60 Hz | | | | |
| Design | B | | | | |
| LR Code letter | G | | | | |
| Service Factor | 1.15 | | | | |
| Temp Rise @ FL | 75 °C | | | | |
| Duty | CONT | | | | |
| Ambient | 40 °C | | | | |
| P | 3,300 feet | | | | |
| F | 31.0 Lb-Ft ² | | | | |
| S | CHT44420001 NONE | | | | |
| Ret Wdg | 87 | | | | |
| Sound Pressure @ 1M | 87 dBA | | | | |
| VFD Rating | VARIABLE 10:1 | | | | |
| Outline Dwg | SS620281-444TS | | | | |
| Conn. Diag | A-EE7300 | | | | |
| Additional Specifications: | | | | | |
| 0 | | | | | |
| 0 | | | | | |
| | EQUIV CKT (OHMS / PHASE) | | | | |
| | R1 | R2 | X1 | X2 | Xm |
| | 0.0340 | 0.0160 | 0.2860 | 0.3870 | 13.7620 |



Speed - Torque Curve

